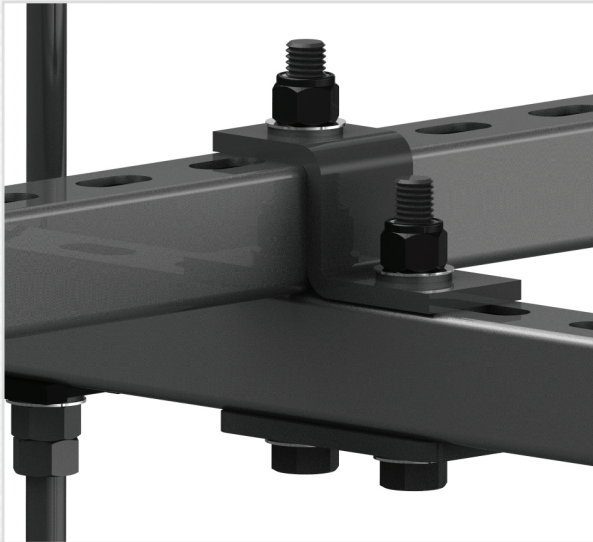


CG-P1045-ZB

(779 lb. WLL)

VIBRATION ISOLATED CHANNEL STRUT CROSS OVER KIT

STRUT ATTACHMENT



STRUT FITTING

This complete cross-over kit provides all the necessary hardware to clamp two channel strut sections together perpendicularly, one over the other. This kit allows for a fast, secure method of clamping these structural sections together to assemble larger fabrications. Non-loosening and sound isolated hardware is included to assure a firm, long lasting and sound dampened connection.



KEY FEATURES:

- ▶ Creates 90 degree junction for strut
- ▶ Secure and load-rated
- ▶ Fast easy installation
- ▶ Vibration isolating components

OPTIONAL ACCESSORIES:

- ▶ See Strut Accessories Datasheet
- ▶ See Threaded Rod Datasheet
- ▶ See Threaded Pipe Datasheet

SPECIFICATIONS:

Material: Structural Steel

Finish: Bright Zinc

Color: Silver

Design Factor: XXXXXXX

WLL: 779 lbs / 354 Kg.

(Assembly Rating)

Shipping Weight: 1.6 lbs / .73 Kg.

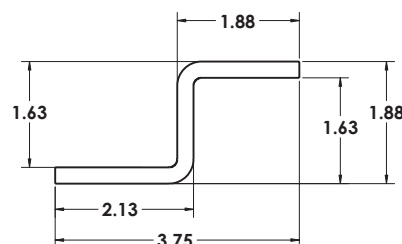
PACKAGE CONTENTS:

- 1 pc** Z Shaped Bracket
- 1 pc** 1/2-13 Hex Bolt x 5" Long
- 1 pc** 1/2-13 Hex Bolt x 3 1/2" Long
- 4 pcs** Sound Isolation Washers
- 2 pcs** 1/2-13 Nyloc Hex Nuts
- 1 pc** Flat Capture Plate

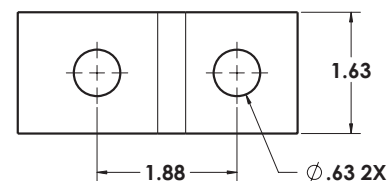
DIMENSIONS:

Z Bracket
CG-P1045-ZB

Side View



Top View



Rated for indoor use.

ALWAYS INSTALL SAFETY CABLES

WARNING: Mounting and/or suspension of audio and video equipment requires experienced professionals. Improperly installed loudspeakers can result in property damage, personal injury and/or liability to the installing contractor.