





MAG Audio has a long history spanning over 25 years. With own unique approach to product development, customer interaction and marketing positioning we have assembled a professional team of experts, and accumulated vast experience in the fields of speaker engineering, design and sound system installation. Each of our products is tested by professional focus-groups before its mass production, as we invite sound engineers, distributors, and musicians to help in honing each model to perfection. Then we run live testing of our new products in collaboration with the best distribution companies to ensure our speakers' livability in a real-world environment.

MAG Audio presents a comprehensive range of audio products, including accessories and compatible amplification, to cover a wide range of applications, including rental, touring, installation and retail markets.

Z series is offering professional sound quality and sharp looks for mobile musicians, small venues and retail establishments. Powered Z series speakers are especially convenient with ready presets and remote control via Bluetooth and Z Control software suite.

High-power MAG Audio product ranges include versatile models for mobile use as well as fixed installations. NX series offers powerful full-ranges available in passive, powered, and installation-dedicated versions. Subwoofer series is the wide range of low-frequency reinforcement products, with conventional powered and passive cabinets, installation-specific speakers made for least interior design footprint, and special-purpose subwoofers for array applications.

Next-generation AIR series and all-new Cluster series offer great flexibility for fixed installation with wide selection of accessories and optional weatherproof design.

Family of ready-out-of-the-box solutions have been extended with three new VerA powered sets. With small sizes, light weight, and included presets for quick and easy installation, VerA range is the choice of mobile professionals, DJs, and venues seeking functionality and versatility in one complete package.

Unique Fly powered array solution is designed for maximum flexibility of use, which includes small-sized ground stacks, medium-sized installation systems, and large-format concert applications.

Flagship line array series now has received the small-sized Wasp module, and with its elder brother Hornet 12 covers large-format applications, including touring, concert, and large club sound.

With our technological know-how, skill, and creativity, combined with modern design, production, and quality control technologies, we specialize in delivering only high-grade products. This MAG Audio catalog serves as a perfect testament to our abilities and strength of our brand.



# Z series



## Passive

Z 320

Z 350

Z 355

Z 318

## Powered

Z 320A

Z 350A

Z 355A

Z 318A





Z series was created to deliver the power and professional sound quality into various indoor and outdoor spaces while keeping budget considerations in check. Versatile and reliable speakers with sharp looks, passive and powered Z series are available for FOH applications as well as for fixed installation and stage monitoring purposes.

Featuring low-wear cabinet coating, high-quality components and thoroughly worked out sonic performance, Z series' speakers compete with speakers way beyond their price range.

To achieve such combination of high performance, optimal sound quality and strict budget constraints, Z series systems were carefully optimized to remain only with performance-critical components and features: low-resonant birch plywood cabinets, reliable Neutrik speakON connectors, MAG Audio loudspeakers and high-frequency drivers known for long-term reliability.

Powered Z series' speakers offer new level of usability and convenience with built-in presets and remote system control via dedicated software suite and Bluetooth connection.

With comprehensive range of mounting and transportation accessories, Z series is all-purpose solution to various sound reinforcement projects of mobile professionals and small to mid-sized venues.





<b>Z 320</b> Passive full-range speaker	<b>Z 350</b> Passive full-range speaker	<b>Z 355</b> Passive full-range speaker	<b>Z 318</b> Passive subwoofer	
50 - 20000 Hz	45 - 20000 Hz	40 - 20000 Hz	33 - 300 Hz	Frequency Response (-10dB)
130 dB	132 dB	138 dB	132 dB	Max SPL <sup>1</sup>
96 dB	98 dB	101 dB	97 dB	Sensitivity (1W/1m)
12", 2,5" VC	15", 2,5" VC	2x15", 2,5" VC	18", 3"	LF Driver
1", 1,75" VC	1", 1,75" VC	1", 1,75" VC		HF Driver
100 x 50 deg	100 x 50 deg	100 x 50 deg		Nominal Coverage Angle (Horizontal x Vertical)
4 Ohm	4 Ohm	4 Ohm	4 Ohm	Impedance
350 W	350 W	650 W	450 W	Nominal power <sup>2</sup>
2x NeutrikSpeakon	2x NeutrikSpeakon	2x NeutrikSpeakon	2x NeutrikSpeakon	Connectors
359x582x344 mm	421x719x400 mm	423x1105x420 mm	552x668x647 mm	Dimensions (WxHxD), mm
16,6 kg	21,2 kg	39 kg	41,1 kg	Net weight, kg
19,1 kg	23,7 kg	42 kg	44,1 kg	Shipping weight, kg
10x M10 mounting points, 35mm adjustable pole socket	10x M10 mounting points, 35mm adjustable pole socket	10x M10 mounting points	M20 distance pole adapter	Mounting
Plywood; wear-resistant paint	Plywood; wear-resistant paint	Plywood; wear-resistant paint	Plywood; wear-resistant paint	Enclosure material
Steel grill, polymer protective net	Steel grill, polymer protective net	Steel grill, polymer protective net	Steel grill, polymer protective net	Grill
<b>Z 320A</b> Powered full-range speaker	<b>Z 350A</b> Powered full-range speaker	<b>Z 355A</b> Powered full-range speaker	<b>Z 318A</b> Powered subwoofer	
50 - 20000 Hz	45 - 20000 Hz	40 - 20000 Hz	33 - 170 Hz	Frequency Response (-10dB)
131 dB	133 dB	137 dB	130 dB	Max SPL (calculated)
12", 2,5" VC	15", 2,5" VC	2x15", 2,5" VC	18", 3" VC	LF Driver
1", 1,75" VC	1", 1,75" VC	1", 1,75" VC		HF Driver
100 x 50 deg	100 x 50 deg	100 x 50 deg		Nominal Coverage Angle (Horizontal x Vertical)
500+150 W	500+150 W	800+400 W	650 W	Amplifier power
Class D, fan cooling, DSP with phase-linear FIR	Class D, fan cooling, DSP with phase-linear FIR	Class D, fan cooling, DSP with phase-linear FIR	Class D, fan cooling, DSP	Amplifier
0 dBV (1 V RMS)	0 dBV (1 V RMS)	0 dBV (1 V RMS)	0 dBV (1 V RMS)	Input sensitivity
XLR input, XLR output, Powercon mains	XLR input, XLR output, Powercon mains	XLR input, XLR output, Powercon mains	XLR input, XLR output, Powercon mains	Connectors
359x582x344 mm	421x719x400 mm	423x1105x420 mm	552x668x647 mm	Dimensions (WxHxD)
17,8 kg	22,4 kg	43 kg	42,3 kg	Net weight
20,3 kg	24,9 kg	46 kg	45,3 kg	Shipping weight
10x M10 mounting points, 35mm adjustable pole socket	10x M10 mounting points, 35mm adjustable pole socket	10x M10 mounting points	M20 distance pole adapter	Mounting
Plywood; wear-resistant paint	Plywood; wear-resistant paint	Plywood; wear-resistant paint	Plywood; wear-resistant paint	Enclosure material
Steel grill, polymer protective net	Steel grill, polymer protective net	Steel grill, polymer protective net	Steel grill, polymer protective net	Grill

<sup>1</sup> - peak value, calculated according to AES 2 - 2012

<sup>2</sup> - based on transducer power measured according to AES 2 - 2012

Z control is a dedicated software suite designed to unleash the full potential of Z series speakers. Used in conjunction with Bluetooth control interface available in powered speakers, Z control is an easy tool to set up and monitor performance of your Z series installation.

Main screen allows for fast detection of near-by Z series units, remote volume adjustment, preset switching, and level monitoring. Basic information, including processor temperature and actual mains voltage is also available.

Software suite controls built-in user 4-band parametric equalizer to adjust to the properties of the venue, and to add personal touch to the sound picture. Options include peaking, low-shelf and high-shelf filters with adjustable bandwidth and up to  $\pm 15$  dB of gain, and polarity switch.

Additionally, Z control incorporates several utility functions: Automatic OFF switch to assist in power saving, cooling fan mode switching to reduce background noise when no signal is available, and Noise function to help with locating Z series units.

Z control incorporates the tool with firmware update, helping users to keep their systems current as new functions and improvements are constantly added.

Z control is a free suite available for download from MAG Audio website.



# NX

series



## Passive

NX 10

NX 12

NX 15

## Powered

NX 10A

NX 12A

NX 15A

## Installation

NX 10i

NX 12i

NX 15i



NX series represents solid and powerful solutions for fixed installations as well as demanding mobile sound applications. NX full-range cabinets are based on top-line neodymium magnet transducers and high frequency drivers fitted with demodulation rings and copper caps for less distortions and improved voice coil cooling, allowing for prolonged high-SPL operation while preserving clarity and intelligibility.

Powered cabinets employ state-of-the-art amplification from Powersoft® and provide ease of use with carefully adjusted built-in presets. Passive NX speakers are fitted with low-distortion crossovers with optimal transfer characteristics, allowing for controlled tuning with external amplification.

Durable cabinets, made of high-quality birch plywood, are ready to face harsh touring conditions. At the same time, optionally available weatherproof treatment extends series usability even further into harsh environmental conditions, including theme parks, skating rinks, and swimming pools.

With outstanding performance and high reliability, NX series is designed to meet demands of various applications, where uncompromised sound quality is a must.



	<b>NX 10</b> Passive full-range speaker <b>NX 10i</b> Installation full-range speaker	<b>NX 12</b> Passive full-range speaker <b>NX 12i</b> Installation full-range speaker	<b>NX 15</b> Passive full-range speaker <b>NX 15i</b> Installation full-range speaker
--	--	--	--

Frequency Response (-10dB)	65 - 19000 Hz	60 - 19000 Hz	50 - 19000 Hz
Max SPL <sup>1</sup>	133 dB	134 dB	134,5 dB
Sensitivity (1W/1m)	97 dB	98 dB	98,5 dB
LF Driver	10", 3" VC	12", 3" VC	15", 3" VC
HF Driver	1,5", 2,8" VC	1,5", 2,8" VC	1,5", 2,8" VC
Nominal Coverage Angle (Horizontal x Vertical)	80 x 70 deg	80 x 70 deg	80 x 70 deg
Impedance	8 Ohm	8 Ohm	8 Ohm
Nominal power <sup>2</sup>	500 W	500 W	500 W
Connector	2x NeutrikSpeakon (NX 15) Barrier strip (NX 10i)	2x NeutrikSpeakon (NX 15) Barrier strip (NX 12i)	2x NeutrikSpeakon (NX 15) Barrier strip (NX 15i)
Dimensions (W×H×D)	319x610x336 mm	379x660x367 mm	436x740x423 mm
Net weight	19 kg	22 kg	26 kg
Shipping weight	22 kg	25 kg	29 kg
Mounting	10x M10 mounting points, 35mm pole socket (NX 10)	10x M10 mounting points, 35mm pole socket (NX 12)	10x M10 mounting points, 35mm pole socket (NX 15)
Enclosure material	Plywood; wear-resistant paint	Plywood; wear-resistant paint	Plywood; wear-resistant paint
Grill	Steel grill, polymer protective net	Steel grill, polymer protective net	Steel grill, polymer protective net

	<b>NX 10A</b> Powered full-range speaker	<b>NX 12A</b> Powered full-range speaker	<b>NX 15A</b> Powered full-range speaker
--	---	---	---

Frequency Response (-10dB)	55 - 20000 Hz	50 - 20000 Hz	45 - 20000 Hz
Max SPL (calculated)	134 dB	135 dB	135,5 dB
LF Driver	10", 3" VC	12", 3" VC	15", 3" VC
HF Driver	1,5", 2,8" VC	1,5", 2,8" VC	1,5", 2,8" VC
Nominal Coverage Angle (Horizontal x Vertical)	80 x 70 deg	80 x 70 deg	80 x 70 deg
Amplifier power	900+500 W	900+500 W	900+500 W
Amplifier	Class D, fan cooling, DSP with phase-linear FIR	Class D, fan cooling, DSP with phase-linear FIR	Class D, fan cooling, DSP with phase-linear FIR
Input sensitivity	0 dBV (1 V RMS)	0 dBV (1 V RMS)	0 dBV (1 V RMS)
Connector	XLR input, XLR output, Powercon mains	XLR input, XLR output, Powercon mains	XLR input, XLR output, Powercon mains
Dimensions (W×H×D)	319x610x336 mm	379x660x367 mm	436x740x423 mm
Net weight	22 kg	25 kg	29 kg
Shipping weight	25 kg	28 kg	32 kg
Mounting	10x M10 mounting points, 35mm pole socket (NX 10A)	10x M10 mounting points, 35mm pole socket (NX 12A)	10x M10 mounting points, 35mm pole socket (NX 15A)
Enclosure material	Plywood; wear-resistant paint	Plywood; wear-resistant paint	Plywood; wear-resistant paint
Grill	Steel grill, polymer protective net	Steel grill, polymer protective net	Steel grill, polymer protective net

<sup>1</sup> - peak value, calculated according to AES 2 - 2012

<sup>2</sup> - based on transducer power measured according to AES 2 - 2012



# AIR

series

## Installation

AIR-62

AIR-82

AIR-122

AIR-152

AIR-210





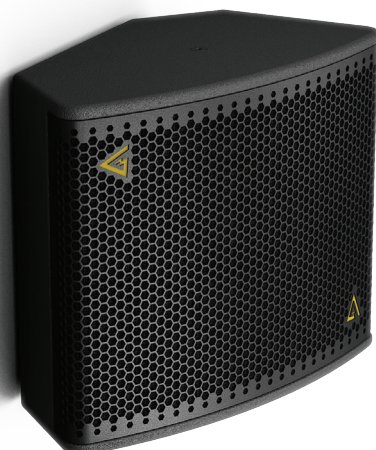
AIR series is a comprehensive range of installation-dedicated speakers, backed-up with various mounting hardware options, including weather-proofing capability.

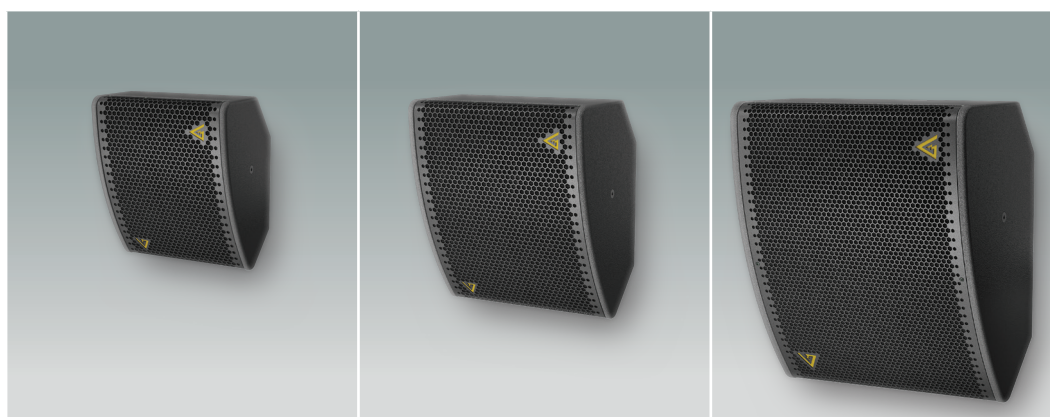
AIR series benefits from truly point-source design based on coaxial and full-range speakers, which opens a new dimension for speaker placement to achieve best possible coverage while keeping sound system visual imprint to the lowest possible minimum.

From the smallest 6-inch to powerful 15-inch cabinet, AIR speakers have special interior-friendly shape that allows achieving most performance per the space occupied. Carefully optimized enclosures and specifically designed drivers are made to be extremely reliable for many years of trouble-free service.



Together with installation subwoofers, AIR cabinets are capable to deliver significant sound pressure required by modern clubs, bars, entertainment centers, malls, and open-air theme parks. With that, speakers' design from transducers impedances, internal crossovers to wire terminal were optimized for each installation to be convenient and budget-friendly.





<b>AIR - 62</b> Installation speaker	<b>AIR - 82</b> Installation speaker	<b>AIR - 122</b> Installation speaker	
90 - 18000 Hz	80 - 18000 Hz	55 - 18000 Hz	Frequency Response (-10dB)
124 dB	127 dB	129,5 dB	Max SPL <sup>1</sup>
93 dB	94 dB	96 dB	Sensitivity (1W/1m)
6", 1,75" VC	8" coaxial	12" coaxial	LF Driver
1", 1" VC			HF Driver
80 x 60 deg	90 x 90 deg	100 x 100 deg	Nominal Coverage Angle (Horizontal x Vertical)
8 / 16 Ohm	8 / 16 Ohm	8 / 16 Ohm	Impedance
150 W	250 W	300 W	Nominal power <sup>2</sup>
Barrier strip	Barrier strip	Barrier strip	Connectors
278x318x200 mm	338x383x242 mm	460x545x334 mm	Dimensions (WxHxD)
6 kg	9,5 kg	24 kg	Net weight
7 kg	10,5 kg	27 kg	Shipping weight
VESA 75x75 3x M10 Mounting points	VESA 75x75 3x M10 Mounting points	VESA 100x100 3x M10 Mounting points	Mounting
Plywood; wear-resistant paint	Plywood; wear-resistant paint	Plywood; wear-resistant paint	Enclosure material
Steel grill, polymer protective net	Steel grill, polymer protective net	Steel grill, polymer protective net	Grill



<b>AIR - 152</b> Installation speaker	<b>AIR - 210</b> Installation speaker	
50 - 18000 Hz	55 - 18000 Hz	Frequency Response (-10dB)
133,5 dB	136 dB	Max SPL <sup>1</sup>
97 dB	98 dB	Sensitivity (1W/1m)
15" coaxial	2x 10", 3" VC	LF Driver
	2", 4" VC	HF Driver
70 x 70 deg	85 x 55 deg	Nominal Coverage Angle (Horizontal x Vertical)
8 Ohm	4 / 8 Ohm	Impedance
600 W	850 W	Nominal power <sup>2</sup>
Barrier strip	Barrier strip	Connectors
510x599x380 mm	750x300x353 mm	Dimensions (WxHxD)
25,5 kg	35 kg	Net weight
27,5 kg	37 kg	Shipping weight
VESA 100x100 3x M10 Mounting points	4x M10 Mounting points	Mounting
Plywood; wear-resistant paint	Plywood; wear-resistant paint	Enclosure material
Steel grill, polymer protective net	Steel grill, polymer protective net	Grill

<sup>1</sup> - peak value, calculated according to AES 2 - 2012

<sup>2</sup> - based on transducer power measured according to AES 2 - 2012

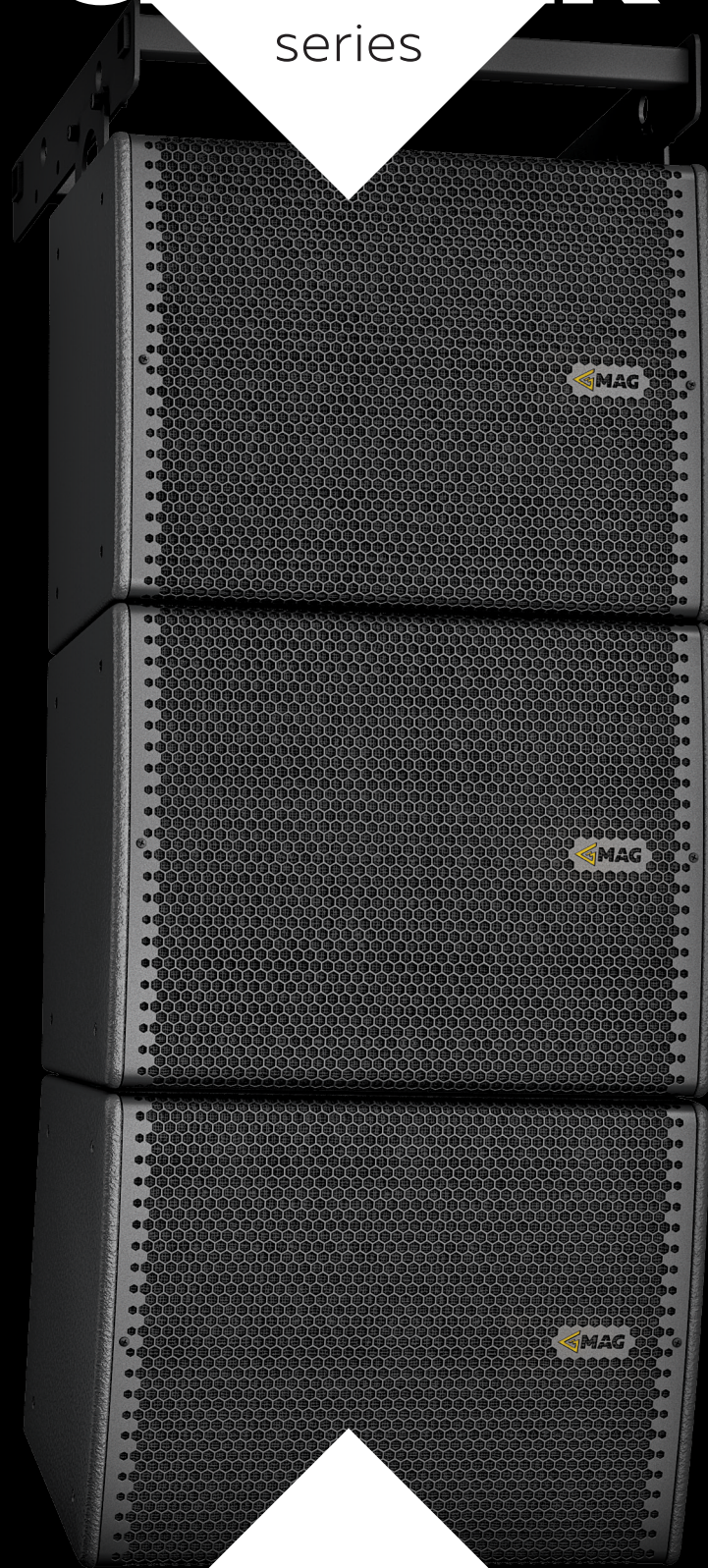


AIR series



# CLUSTER

series



## Installation

Cluster Q

Cluster Q4

Cluster Q8





Covering the demand for high-pressure systems for night-clubs, concert halls, and sport arenas, Cluster series introduces the power of arrayable speakers into the realm of fixed installation. Inheriting the best features of reliability, sound performance, and ease of control from touring and mobile sound, Cluster series is augmented with convenient mounting hardware solution for quick setups and perfect fit into the architectural designs.

Cluster Q, Q4 and Q8 systems represent a unique installation line array system with integrated mounting capabilities, providing flexible tool for system engineer to introduce uniform coverage into each and any of sound projects. With convenient options for wiring and amplifier connection, Q, Q4 and Q8 can be used to accurately steer the sound field for even the most difficult acoustical conditions.

Cluster series are optionally available as waterproof, and can be used with installation subwoofers to deliver a complete package of in-house sound system for a sound-pressure demanding high-profile projects.



	Cluster Q Installation line array module	Cluster Q4 Installation line array module	Cluster Q8 Installation line array module
Frequency response (-10dB)	100 - 19000 Hz		
Max SPL <sup>1</sup>	142 dB		
Sensitivity (1W/1m)	98 dB Low / 113 dB High		
LF Driver	4x 6", 1,75" VC		
HF Driver	2x 1", 1,75" VC		
Horizontal coverage	90 deg		
Vertical splay angle	0 deg	4 deg	8 deg
Impedance	8 Ohm Low / 16 Ohm High		
Nominal power <sup>2</sup>	520 W Low / 100 W High		
Connectors	Barrier strip		
Dimensions (WxHxD)	480x368x286 mm	480x372x298 mm	480x371x99 mm
Net weight	24 kg		
Shipping weight	26,5 kg		
Mounting	Integrated flying hardware		
Enclosure materials	Plywood; wear resistant paint		
Grill	Steel grill, polymere protective net		

<sup>1</sup> - peak value, calculated according to AES 2 - 2012

<sup>2</sup> - based on transducer power measured according to AES 2 - 2012

# VerA

series

## Plug&Play

VerA S

VerA M

VerA L





Following success of plug & play powered speakers sets for mobile professionals, DJs and small venues, VerA series offers several solutions in terms of power and output pressure.

With the word “usability” in mind, VerA series is made specifically for ease of use and transportation, while providing sound performance and reliability rivaling those of bigger sets.

Totally independent portable plug & play systems in the best way combine high sound quality and compact size, still delivering considerable sound pressure.

Based on renowned Powersoft® amplification, VerA sets are complete with ready presets, ensuring quick set-up as well as smooth and flawless operation to any user.



### VerA S

Powered speaker set

Frequency Response (-10dB)	45 - 20000 Hz
Max SPL (calculated)	134 dB
Subwoofer transducer	12", 4" VC
Satellite transducers	2x 6", 1,75" VC; 1", 1,75" VC (one satellite)
Nominal Coverage Angle (Horizontal x Vertical)	90 x 40 deg (per side)
Total system power	2400 W
Amplifier channels	1200 + 2x600 W
Amplifier	Class D, fan cooling, DSP with phase-linear FIR
Input sensitivity	0 dBV (1 V RMS)
Connectors	Dual XLR inputs, Dual XLR outputs, Powercon mains
<b>Connections and physical data – satellite speaker</b>	
Dimensions (W×H×D)	171x538x223 mm (each)
Net weight	9 kg (each)
Shipping weight	10 kg (each)
Mounting	35mm pole socket
Enclosure material	Plywood; wear-resistant paint
Grill	Steel grill, polymer protective net
<b>Connections and physical data – subwoofer</b>	
Dimensions (W×H×D)	430x480x555 mm
Net weight	30 kg
Shipping weight	32 kg
Mounting	M20 distance pole adapter
Enclosure material	Plywood; wear-resistant paint



The smallest set - VerA S - is miniature enough to fit into the trunk of the car, while still providing enough “kick” for a party, small gig or presentation. Dual 6-inch satellite speakers are conveniently powered from subwoofer’s power module, keeping required connections and knowledge needed to run the system to the minimum.

VerA M is a great solution for DJs and entertainers looking for additional power while keeping size and weight in check. With two effective 15” subwoofers and quad 6-inch satellites, VerA M is a perfect match for a small concert, bar or entertainment hall.

For even more versatility in application, VerA L has a unique feature for vertical dispersion control with separation of mid-high frequency sections. Extended usability now includes delay lines, front-fill and balcony coverage.

VerA series is supplied complete with all the necessary accessories: stands, transportation bags and cables, promptly delivering on “out-of-the-box solution” promise. Complete, ready-to-go, all-powered and preset solutions, VerA series establishes a whole new level of usability, convenience, and portability.



VerA M		VerA L	
Powered speaker set		Powered speaker set	
42 - 20000 Hz	42 - 20000 Hz	Frequency Response (-10dB)	
135 dB (one subwoofer + one satellite)	136 dB (one subwoofer + one satellite)	Max SPL (calculated)	
15", 4" VC (one subwoofer)	15", 4" VC (one subwoofer)	Subwoofer transducer	
4x 6", 1,75" VC; 1", 1,75" VC (one satellite)	4x 6", 1,75" VC; 6", 1,5" VC; 1", 1,75" VC (one satellite)	Top speakers' transducers	
90 x 40 deg (per side)	90 x 40 deg (per side) Adjustable vertical angle	Nominal Coverage Angle (Horizontal x Vertical)	
3500 W	4800 W	Total system power	
1000 + 600 + 150 W (per side)	1200 + 600 + 600 W (per side)	Amplifier channels	
Class D, fan cooling, DSP with phase-linear FIR	Class D, fan cooling, DSP with phase-linear FIR	Amplifier	
0 dBV (1 V RMS)	0 dBV (1 V RMS)	Input sensitivity	
XLR input, XLR output, Powercon mains	XLR input, XLR output, Powercon mains	Connector	
<b>Connections and physical data – satellite speaker</b>	<b>Connections and physical data – satellite speaker</b>		
171x870x222 mm	183x1180x250 mm	Dimensions (WxHxD)	
14 kg (each)	24,5 kg each (each)	Net weight	
16 kg (each)	27,5 kg (each)	Shipping weight	
35mm pole socket	35mm pole socket	Mounting	
Plywood; wear-resistant paint	Plywood; wear-resistant paint	Enclosure material	
Steel grill, polymer protective net	Steel grill, polymer protective net	Grill	
<b>Connections and physical data – subwoofer</b>	<b>Connections and physical data – subwoofer</b>		
550x655x650 mm	550x655x650 mm	Dimensions (WxHxD)	
49 kg	49 kg	Net weight	
52 kg	52 kg	Shipping weight	
M20 distance pole adapter	M20 distance pole adapter	Mounting	
Plywood; wear-resistant paint	Plywood; wear-resistant paint	Enclosure material	



VerA series



# FLY

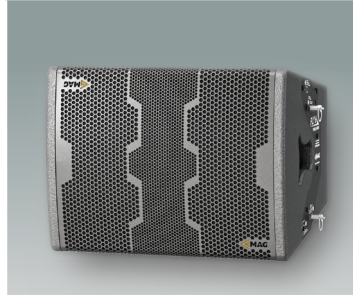
series



**Powered**  
Fly 6  
Fly Sub 12  
Fly Sub 15  
Fly Sub 18



# FLY series



**Fly 6**

Powered line array module

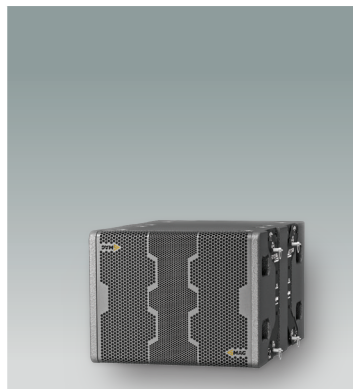
Frequency Response (-10dB)	100 – 19000 Hz
Max SPL (calculated)	133,5 dB
LF Driver	4x 6", 1,75" VC
MF Driver	2x 1", 1,75" VC
Nominal Coverage Angle (Horizontal x Vertical)	100 x 15 deg
Amplifier power	1050 W
Amplifier	Class D, fan cooling, DSP with phase-linear FIR
Input sensitivity	+4
Settings	4 switchable presets
Connector	XLR in + XLR out, Powercon mains
Dimensions (WxHxD)	496x376x396 mm
Net weight	24 kg
Shipping weight	27 kg
Mounting	Integrated flying hardware
Enclosure material	Plywood; wear-resistant paint
Grill	Steel grill, polymer protective net

Fly 6 is a compact powered line array with fixed vertical disclosure angle. This system was specially designed for use in small concert halls, theaters and clubs, where the features of line array are needed. Based on new neodymium drivers, Fly 6 sets new standards in relation between size, power and sound. Structurally Fly 6 has a closed box with 4-frontally loaded 6-inch neodymium speakers and 2-neodymium 1-inch HF drivers loaded on the waveguide. Each speaker is powered by Powersoft® four-channel digital amplifier module with hi-tech DSP.



Due to its design and large accessories selection, this system is easy to use and has many installation options : suspension - up to 4 modules; ground-stack - up to 3 modules. System could be mounted on a stand or adapter, etc.

Fly 6 is reinforced by comprehensive range of subwoofers: dual 12-inch flyable Fly Sub 12, versatile dual 15-inch Fly Sub 15, and ultimate dual 18-inch Fly Sub 18.



**Fly Sub 12**

Powered line array subwoofer



**Fly Sub 15**

Powered line array subwoofer



**Fly Sub 18**

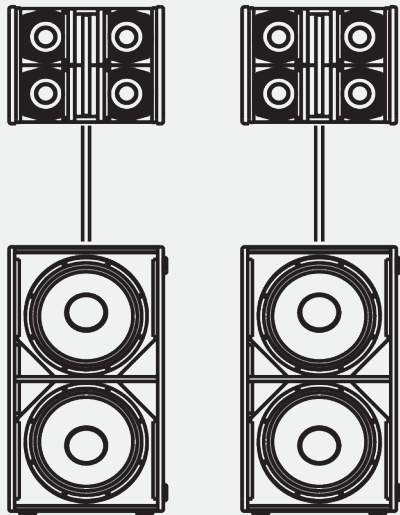
Powered line array subwoofer

Frequency Response (-10dB)	60 – 220 Hz	45 – 200 Hz	27 – 150 Hz
Max SPL (calculated)	134,5 dB	137 dB	138 dB
LF Driver	2x 12", 2,5" VC	2x 15", 4" VC	2x 18", 4" VC
Amplifier power	1400 W	2000 W	2000 W
Amplifier	Class D Powersoft® Fan cooling, DSP	Class D Powersoft® Fan cooling, DSP	Class D Powersoft® Fan cooling, DSP
Input sensitivity	+4 dBV	+4 dBV	+4 dBV
Settings	4 switchable presets	4 switchable presets	4 switchable presets
Connector	XLR in + XLR out, Powercon mains	XLR in + XLR out, Powercon mains	XLR in + XLR out, Powercon mains
Dimensions (WxHxD)	496x380x694 mm	506x860x578 mm	496x1146x676 mm
Net weight	36 kg	59 kg	79 kg
Shipping weight	39 kg	63 kg	84 kg
Mounting	Integrated flying hardware	Two M20 distance pole adapters Fly array U-bracket adapter	Two M20 distance pole adapters Fly array U-bracket adapter
Enclosure materials	Plywood; wear-resistant paint	Plywood; wear-resistant paint	Plywood; wear-resistant paint
Grill	Steel grill	Steel grill	Steel grill

## MOBILE configuration

Fly 6 - 2 pcs  
Fly Sub 15 or Fly Sub 18 - 2 pcs

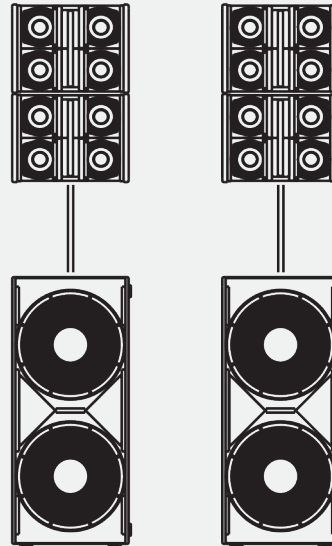
Nominal amplifier power: 6 100 W  
Small to mid-sized halls, pole mounted or ground stacked  
Audience: up to 400 people



## COMPACT configuration

Fly 6 - 4 pcs  
Fly Sub 18 - 2 pcs

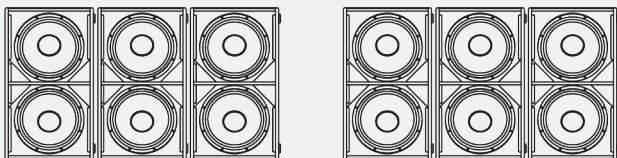
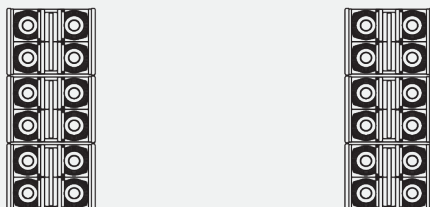
Nominal amplifier power: 8 200 W  
Compact set for mid-sized halls, pole mounted or ground stacked  
Audience: up to 700 people



## PERFORMANCE configuration

Fly 6 - 6 pcs  
Fly Sub 15 or Fly Sub 18 - 6 pcs

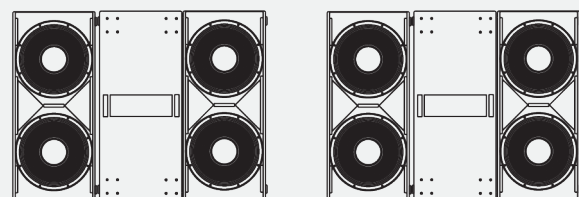
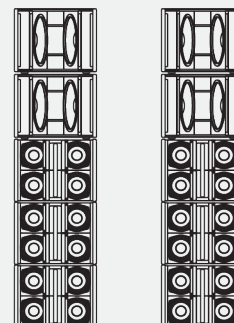
Nominal amplifier power: 18 300 W  
Small concerts, clubs  
Audience: up to 1000 people



## FULL configuration

Fly 6 - 6 pcs  
Fly Sub 12 - 4 pcs  
Fly Sub 18 - 6 pcs

Nominal amplifier power: 23 900 W  
Concerts, clubs  
Audience: up to 1200 people





FLY series



# LINE ARRAY

series



**Touring**  
Wasp  
Hornet 12



# WASP line array

Wasp is the newest addition to the MAG Audio large-format systems family. It is a great tool for mid-sized indoor and outdoor installations, as well as touring applications and concert venues.

Dual 8-inch system with 1,5-inch throat HF driver, Wasp has received the most advanced components to assist with task of creating the ultimate compact line-array solution. Thoroughly designed cabinets, most advanced proprietary mounting system, and wide selection of mounting and connectivity accessories was called in to provide the fast mounting\dismounting times, as well as ease of transportation and storage.

Complete amplification solution is available for Wasp as well. Ready-to-go touring racks are fitted with signal and power distribution, and are based on state-of-the-art touring amplifiers from Powersoft®. Wasp system usability is further extended with available presets as well as GLL files for fast system performance prediction.

Compatible with several low-frequency support cabinets from Subwoofer series, Wasp is a versatile touring and concert system, benefiting from compact size, high-quality components, and numerous installation options.



## Wasp

Passive line array module

Frequency Response (-10dB)	70 - 20000 Hz
Max SPL <sup>1</sup>	141 dB (single cabinet)
Sensitivity (1W/1m)	98 dB Low / 110 dB High
LF Driver	2x 8", 2,5" VC
HF Driver	1", 2,8" VC
Horizontal coverage	100 deg
Vertical coverage	Depends on cabinet count
Impedance	16 Ohm Low / 16 Ohm High
Nominal power <sup>2</sup>	600 W Low / 100 W High
Connectors	2x Neutrik speakon
Dimensions (W×H×D)	608x243x422 mm
Net weight	22 kg
Shipping weight	25 kg
Mounting	Integrated flying hardware 0° - 10° Splay angle
Enclosure material	Plywood; wear-resistant paint
Grill	Steel grill, polymer protective net

<sup>1</sup> - peak value, calculated according to AES 2 - 2012

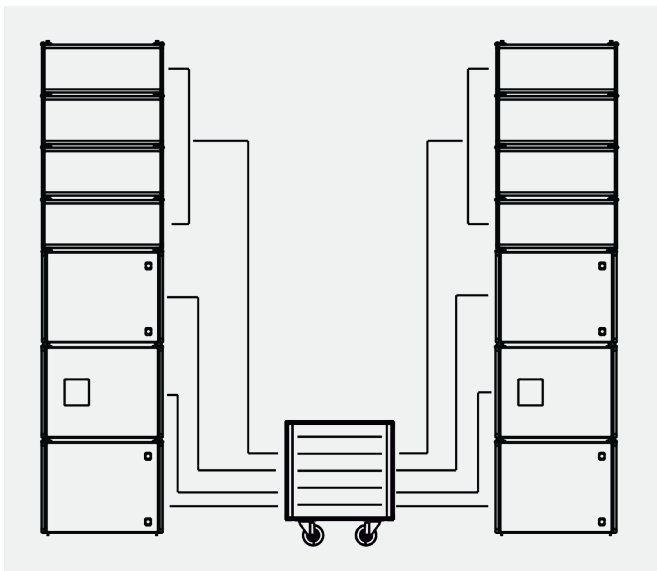
<sup>2</sup> - based on transducer power measured according to AES 2 - 2012



## COMPACT configuration

Wasp - 8 pcs  
Sub H12 - 6 pcs  
AmpRack2 - 1 pcs

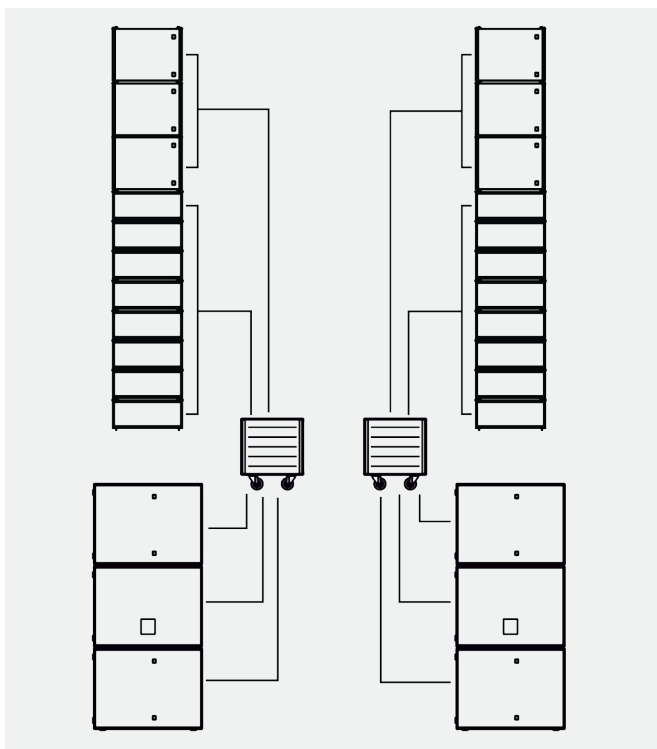
Nominal set power: 11 300 W  
Ground-stacked compact set  
Audience: up to 1000 people



## CONCERT configuration

Wasp - 16 pcs  
Sub H12 - 6 pcs  
Sub H28 - 6 pcs  
AmpRack2 - 2 pcs

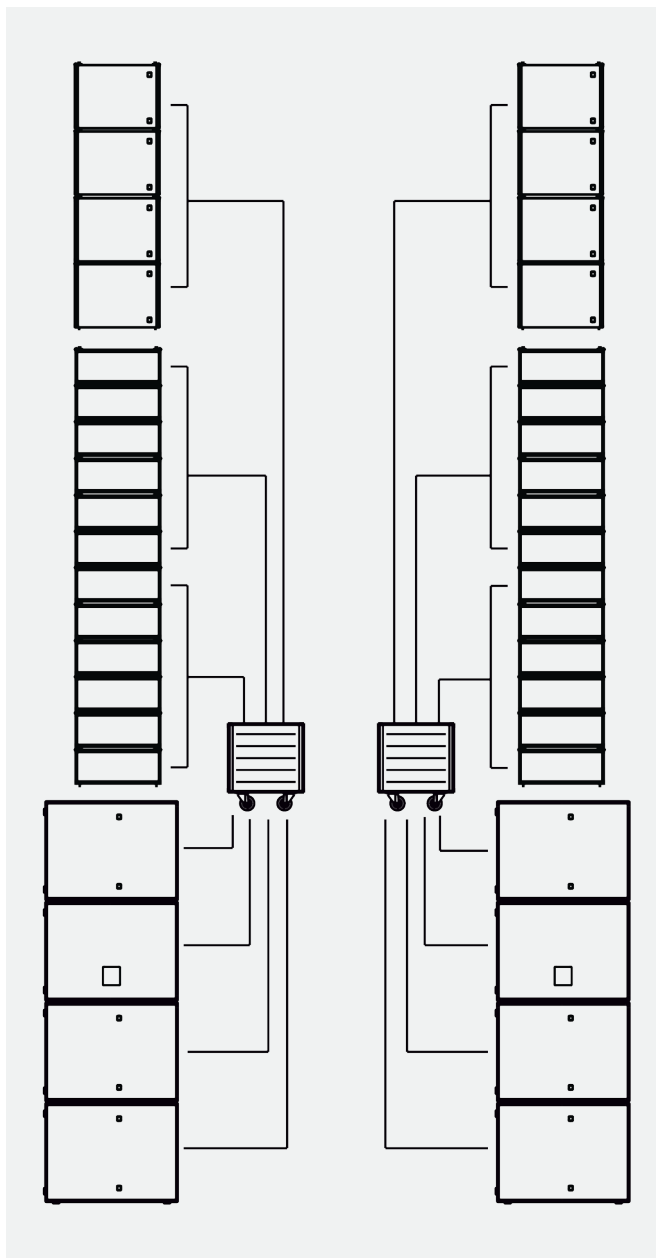
Nominal set power: 34 300 W  
Concerts, open-air events  
Audience: up to 3000 people



## TOURING configuration

Wasp - 24 pcs  
Sub H12 - 8 pcs  
Sub H28 - 8 pcs  
AmpRack3 - 2 pcs

Nominal set power: 47 600 W  
Large concerts, touring  
Audience: up to 5000 people



# HORNET 12 line array

Flagship of MAG Audio line arrays, Hornet 12 is known to have hosted many tours of pop and rock stars, as well as important large-format night clubs and concert arenas. Extremely powerful 3-way all neodymium Hornet 12 units deliver ultimate sound pressure levels, while retaining control and steering of the sonic picture.

Based on own MAG Audio carefully developed highly efficient neodymium cone transducers and HF drivers, Hornet 12 was created to be the most compact, lightweight and powerful system for mid- and large- scale indoor and outdoor concerts, touring, sport events, and clubs. Fitted with proprietary design flying hardware, Hornet 12 stacking and flying is quick and easy, with link action easily understood even by a child.

Followed by numerous setup options, including flying directly from ground carts, Hornet 12 is the choice for mobile professionals, touring teams, and rental sound.

Hornet 12 is backed-up by complete installation touring-ready racks, involving amplification from industry leader Powersoft®, ready system presets for fast setup and tuning, and GLL files for acoustic behavior prediction.

Subwoofer series provides several low-frequency systems to support the Hornet 12 in medium- to large-scale indoor and outdoor installations, concerts, and touring.



**Hornet 12**

Passive line array module

Frequency response (-10dB)	45 – 18000 Hz
Max SPL (calculated) <sup>1</sup>	144 dB
Sensitivity (1W/1m)	99 dB LF / 107 dB MF / 112 dB HF
LF Driver	2x12", 4" VC
MF Driver	4x6", 1,5" VC
HF Driver	2x1,4", 2,8" VC
Horizontal coverage	110 deg
Vertical coverage	Depends on the number of cabinets
Impedance	8 Ohm LF1 / 8 Ohm LF2 / 8 Ohm MF / 8 Ohm HF
Nominal power <sup>2</sup>	1000W LF1 + 1000W LF2 + 400W MF + 200W HF
Connectors	2x Neutrik Speakon
Dimensions (WxHxD)	975x381x444 mm
Net weight	66 kg
Shipping weight	70 kg
Mounting	Integrated flying hardware 0° - 10° Splay angle
Enclosure materials	Plywood; wear-resistant paint
Grill	Steel grill, polymer protective net

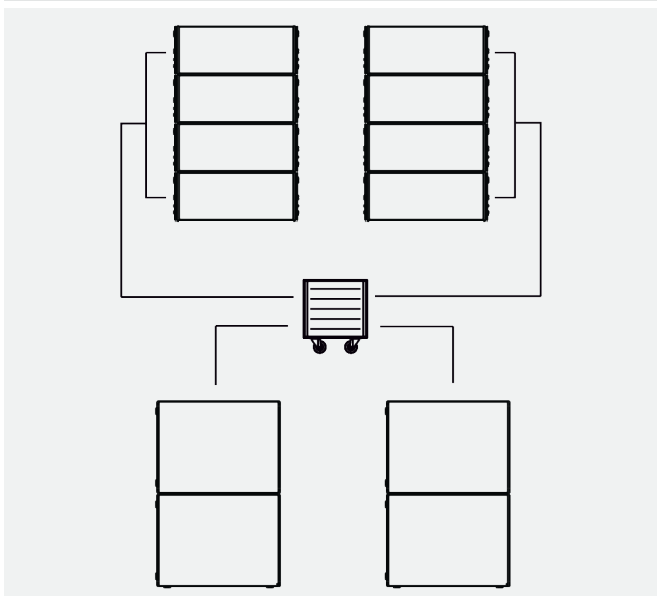
<sup>1</sup> - peak value, calculated according to AES 2 - 2012

<sup>2</sup> - based on transducer power measured according to AES 2 - 2012

## MOBILE configuration

Hornet 12 - 8 pcs  
 Sub H28 - 4 pcs  
 AmpRack3 - 1 pcs

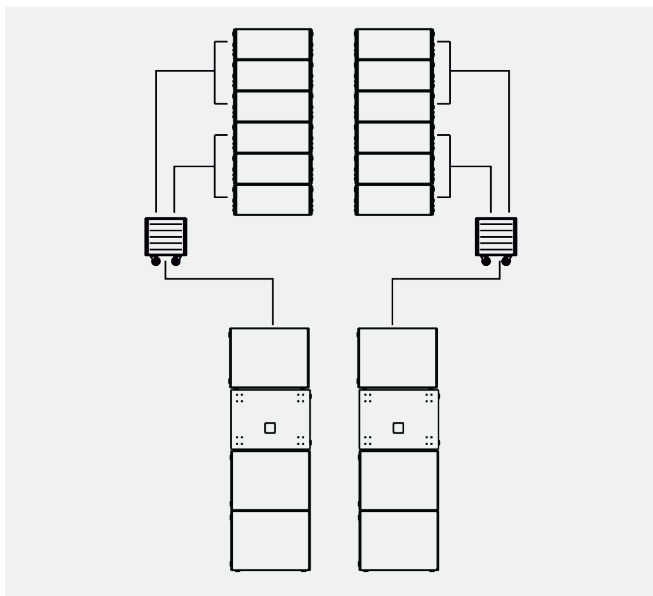
Nominal set power: 33 600 W  
 Portable ground-stacked set  
 Audience: up to 2000 people



## COMPACT configuration

Hornet 12 - 12 pcs  
 Sub H28 - 8 pcs  
 AmpRack3 - 2 pcs

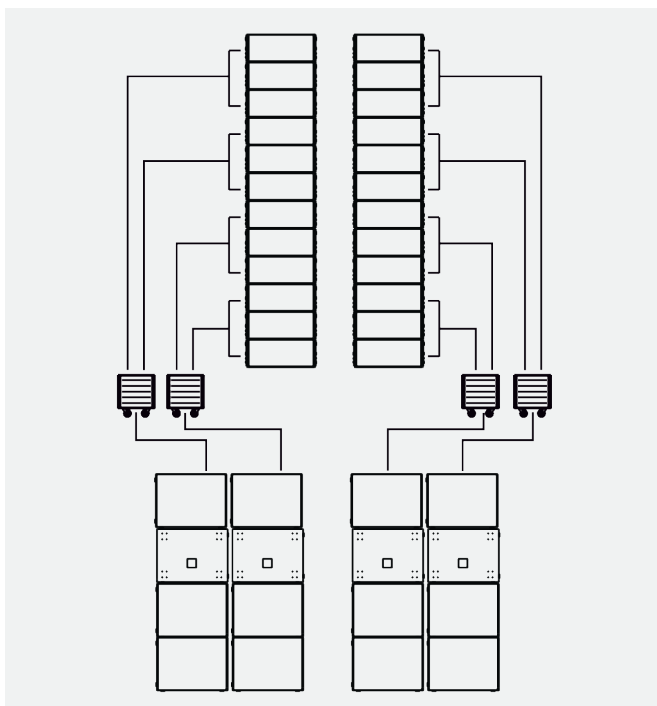
Nominal set power: 56 800 W  
 Small concerts, clubs, open-air events  
 Audience: up to 3500 people



## PERFORMANCE configuration

Hornet 12 - 24 pcs  
 Sub H28 - 16 pcs  
 AmpRack3 - 4 pcs

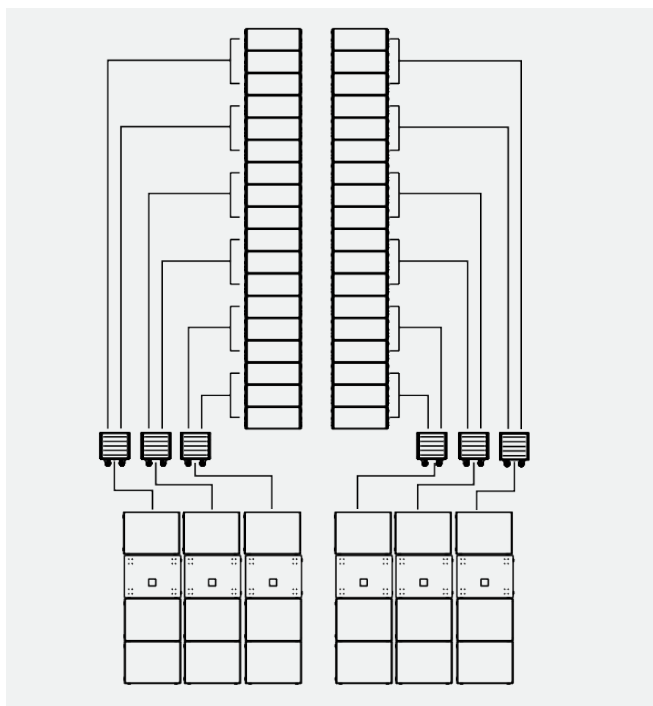
Nominal set power: 113 600 W  
 Open-air concerts, touring  
 Audience: up to 7000 people

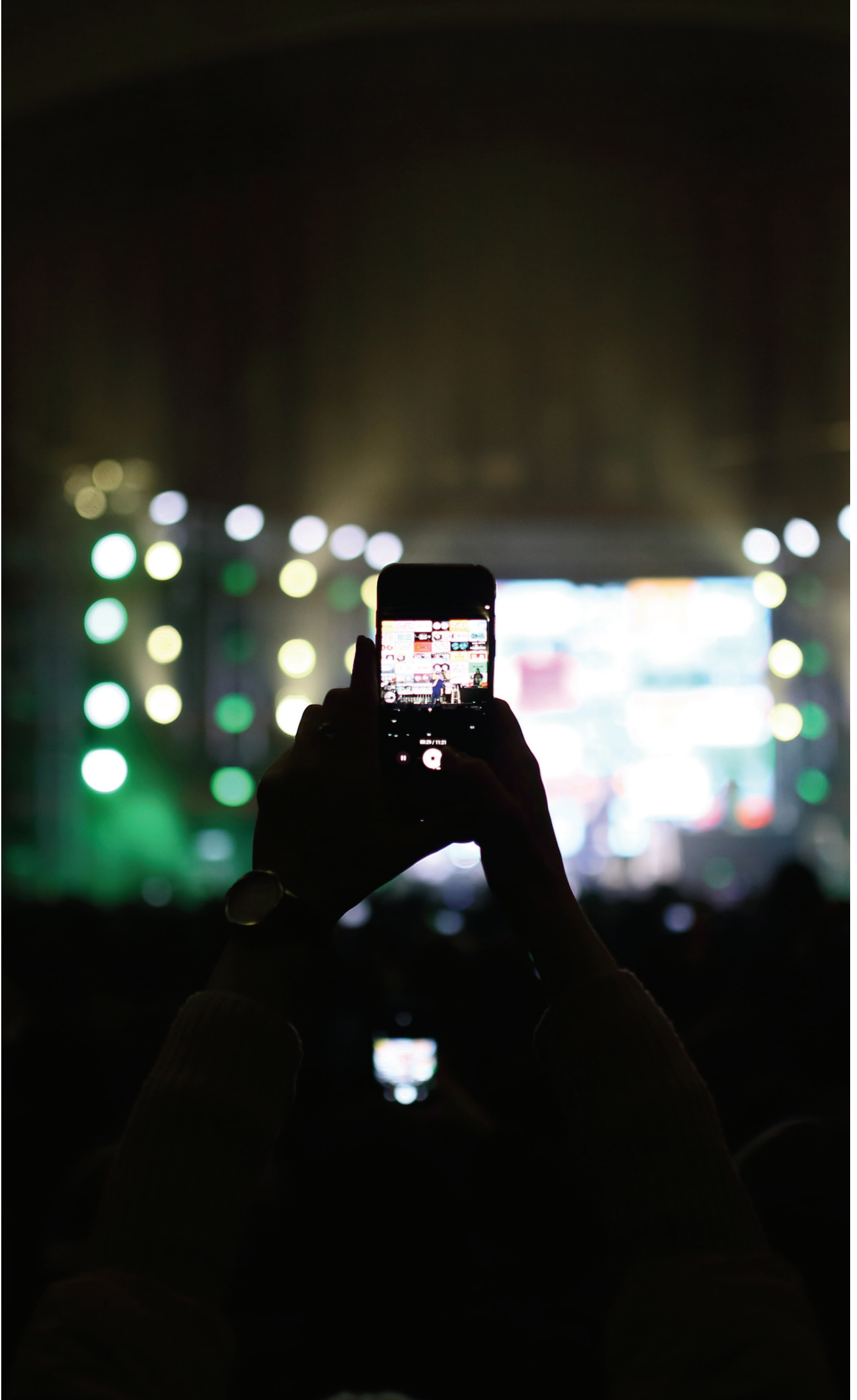


## TOURING configuration

Hornet 12 - 36 pcs  
 Sub H28 - 24 pcs  
 AmpRack3 - 6 pcs

Nominal set power: 170 400 W  
 Large concerts, large-scale touring  
 Audience: up to 10000 people





# SUBWOOFER

series



## **Passive**

Sub 12

Sub 15

Sub 18

Sub 28

## **Powered**

Sub 12A

Sub 15A

Sub 18A

## **Installation**

Sub 12i

Sub 15i

Sub 18i

## **Purpose specific**

Sub C15

Sub H12





Sub H25

Sub H28





With purpose to serve as an ultimate low frequency reinforcement range, Subwoofer series takes advantage of tremendous experience in touring, installation and mobile markets. Designed as all-purpose solutions, these cabinets are nevertheless capable to fit into the specific demands of innovative projects.

				
	<b>Sub 12</b> Passive subwoofer	<b>Sub 15</b> Passive subwoofer	<b>Sub 18</b> Passive subwoofer	<b>Sub 28</b> Passive subwoofer
Frequency Response (-10dB)	45 - 300 Hz	37 - 300 Hz	33 - 300 Hz	30 - 220 Hz
Max SPL <sup>1</sup>	130,5 dB	133 dB	138 dB	143 dB
Sensitivity (1W/1m)	95 dB	94 dB	98 dB	100 dB
LF Driver	12", 3" VC	15", 4" VC	18", 4" VC	2x18", 4" VC
Impedance	4 / 8 Ohm	4 / 8 Ohm	4 / 8 Ohm	4 Ohm
Nominal power <sup>2</sup>	450 W	1000 W	1300 W	2600 W
Connectors	2x NeutrikSpeakon	2x NeutrikSpeakon	2x NeutrikSpeakon	2x NeutrikSpeakon
Dimensions (W×H×D)	390x463x443 mm	440x523x479 mm	530x613x621 mm	530x1153x651 mm
Net weight	29 kg	37 kg	42 kg	78 kg
Shipping weight	32 kg	40 kg	45 kg	81 kg
Mounting	M20 distance pole adapter	IM20 distance pole adapter	M20 distance pole adapter	
Enclosure material	Plywood; wear-resistant paint	Plywood; wear-resistant paint	Plywood; wear-resistant paint	Plywood; wear-resistant paint
Grill	Steel grill, acoustically transparent foam	Steel grill, acoustically transparent foam	Steel grill, acoustically transparent foam	Steel grill, acoustically transparent foam
	<b>Sub 12A</b> Powered subwoofer	<b>Sub 15A</b> Powered subwoofer	<b>Sub 18A</b> Powered subwoofer	
Frequency Response (-10dB)	43 - 170 Hz	35 - 170 Hz	31 - 170 Hz	
Max SPL (calculated)	127,5 dB	134 dB	138 dB	
LF Driver	12", 3" VC	15", 4" VC	18", 4" VC	
Amplifier power	650 W	2400 W	2400 W	
Amplifier	Class D, fan cooling, DSP	Class D, fan cooling, DSP	Class D, fan cooling, DSP	
Input sensitivity	0 dBV (1 V RMS)	0 dBV (1 V RMS)	0 dBV (1 V RMS)	
Connectors	XLR input, XLR output, Powercon mains	XLR input, XLR output, Powercon mains	XLR input, XLR output, Powercon mains	
Dimensions (W×H×D)	390x463x443 mm	440x523x479 mm	530x613x621 mm	
Net weight	32 kg	40 kg	45 kg	
Shipping weight	35 kg	43 kg	48 kg	
Mounting	M20 distance pole adapter	IM20 distance pole adapter	M20 distance pole adapter	
Enclosure material	Plywood; wear-resistant paint	Plywood; wear-resistant paint	Plywood; wear-resistant paint	
Grill	Steel grill, acoustically transparent foam	Steel grill, acoustically transparent foam	Steel grill, acoustically transparent foam	

<sup>1</sup> - peak value, calculated according to AES 2 - 2012

<sup>2</sup> - based on transducer power measured according to AES 2 - 2012



To deliver on such demanding specifications, the thorough overhaul of low-frequency amplification concept was required. Subwoofer series is equipped with next-generation transducers with reinforced moving system capable of withstanding tremendous pressure and excursion while keeping distortion in check. Cabinets went through careful optimization for most output, least vent noise, and least weight and size.

Powered cabinets involve innovative amplification approach that takes advantage of advanced DSP algorithms to drive harmonic distortion and other non-linearities to unprecedentedly low level, providing exceptional listening experience.

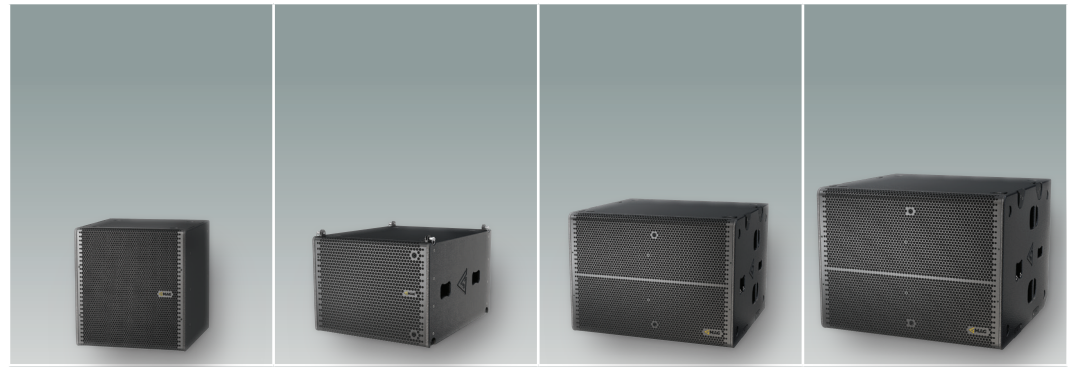
Series includes conventional passive and powered boxes for mobile and stationary use, installation-ready cabinets with several mounting possibilities and weatherproof option, and special purpose subwoofers for low-frequency clusters in touring and concert applications.



Sub 12i	Sub 15i	Sub 18i	
Installation subwoofer	Installation subwoofer	Installation subwoofer	
45 - 300 Hz	37 - 300 Hz	33 - 300 Hz	Frequency Response (-10dB)
130,5 dB	133 dB	138 dB	Max SPL
95 dB	94 dB	98 dB	Sensitivity (1W/1m)
12", 3" VC	15", 4" VC	18", 4" VC	LF Driver
4 / 8 Ohm	4 / 8 Ohm	4 / 8 Ohm	Impedance
450 W	1000 W	1300 W	Nominal power
Barrier strip	Barrier strip	Barrier strip	Connectors
616x486x335 mm	700x527x370 mm	840x600x440 mm	Dimensions (W×H×D)
29 kg	36 kg	50 kg	Net weight
33 kg	41 kg	55 kg	Shipping weight
10x M10 mounting points VESA 200x200	10x M10 mounting points VESA 200x200	10x M10 mounting points VESA 200x200	Mounting
Plywood; wear-resistant paint	Plywood; wear-resistant paint	Plywood; wear-resistant paint	Enclosure material
Steel grill, acoustically transparent foam	Steel grill, acoustically transparent foam	Steel grill, acoustically transparent foam	Grill

<sup>1</sup> - peak value, calculated according to AES 2 - 2012

<sup>2</sup> - based on transducer power measured according to AES 2 - 2012



	<b>Sub C15</b> Passive arrayable subwoofer	<b>Sub H12</b> Passive arrayable subwoofer	<b>Sub H25</b> Passive hybrid-horn subwoofer	<b>Sub H28</b> Passive hybrid-horn subwoofer
--	---	---	---	---

Frequency Response (-10dB)	37 - 300 Hz	42 - 140 Hz	37 - 120 Hz	28 - 120 Hz
Max SPL <sup>1</sup>	133 dB	140 dB	146,5 dB	149,5 dB
Sensitivity (1W/1m)	94 dB	101 dB	105 dB	106 dB
LF Driver	15", 4" VC	12", 4" VC	2x 15", 4" VC	2x 18", 4,5" VC
Impedance	8 Ohm	8 Ohm	4 Ohm	4 Ohm
Nominal power <sup>2</sup>	1000 W	950 W	1700 W	2900 W
Connectors	4x NeutrikSpeakon	4x NeutrikSpeakon	4x NeutrikSpeakon	4x NeutrikSpeakon
Dimensions (W×H×D)	456x509x513 mm	608x460x765 mm	700x980x900 mm	700x980x938 mm
Net weight	38 kg	44,6 kg	92 kg	115 kg
Shipping weight	41 kg	47,6 kg	96 kg	120 kg
Mounting	Intergrated flying hardware	Intergrated flying hardware	Intergrated mounted hardware	Intergrated mounted hardware
Enclosure material	Plywood; wear-resistant paint	Plywood; wear-resistant paint	Plywood; wear-resistant paint	Plywood; wear-resistant paint
Grill	Steel grill, acoustically transparent foam	Steel grill, acoustically transparent foam	Steel grill, acoustically transparent foam	Steel grill, acoustically transparent foam

<sup>1</sup> - peak value, calculated according to AES 2 - 2012

<sup>2</sup> - based on transducer power measured according to AES 2 - 2012





# FOCUS

series

## Passive

Focus 12

Focus 15

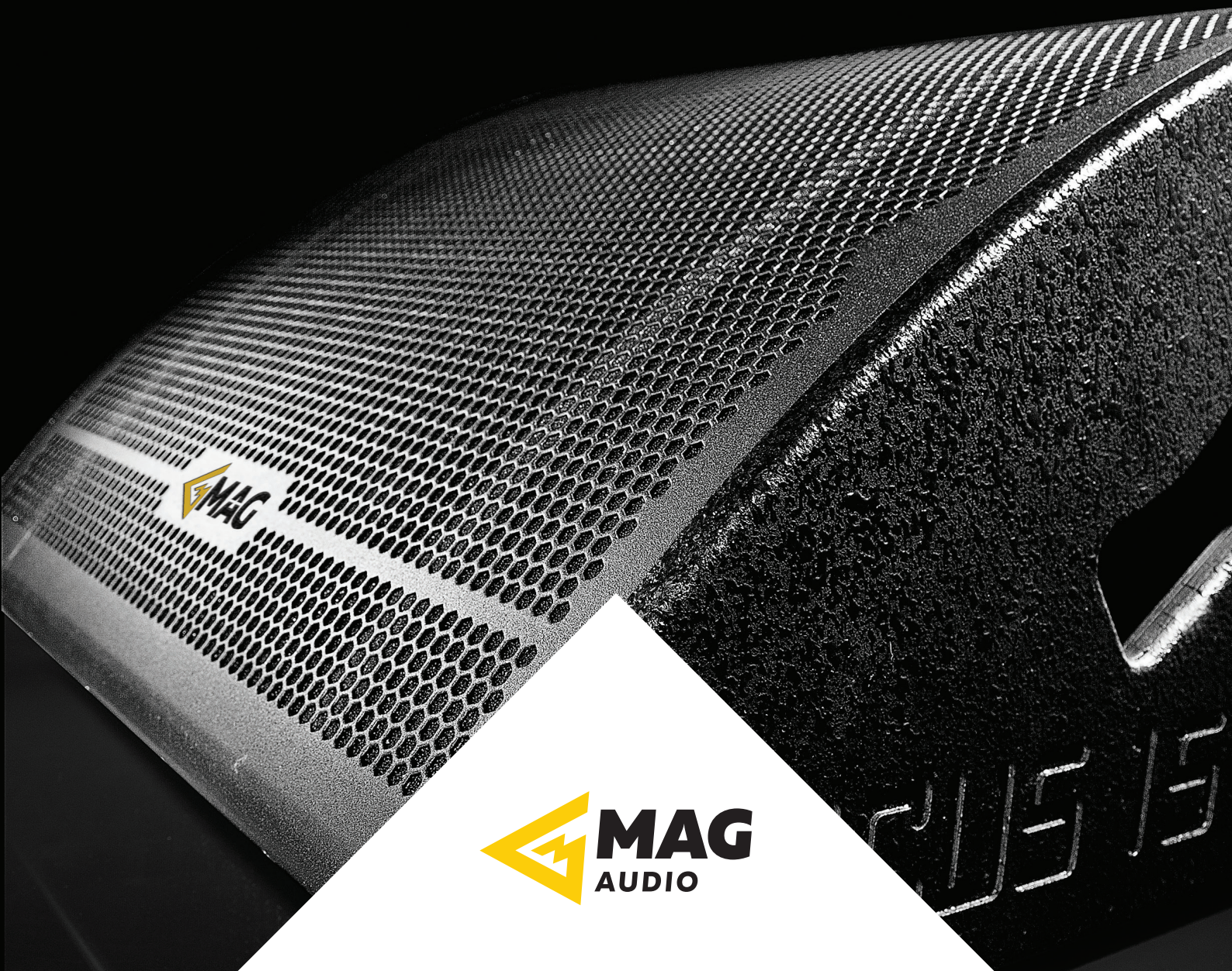
Focus Sub

## Powered

Focus 12A

Focus 15A

Focus SubA





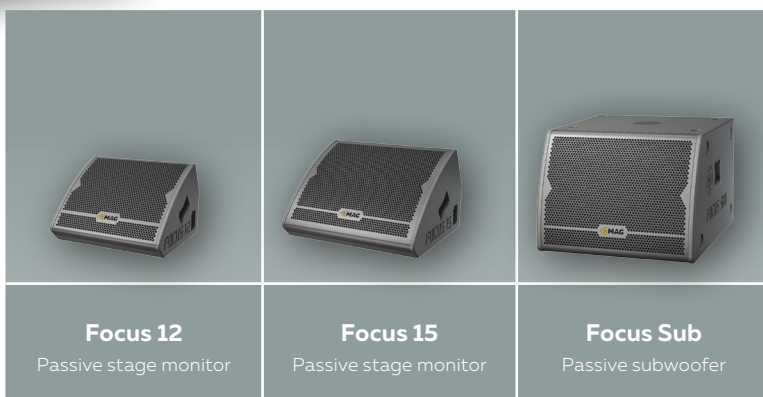
Coaxial line of low-profile stage monitors with no casual name – coaxial design of drivers provides perfect phase coherence and clearly focused sound picture in front of a performer. Vocal has never sounded so clearly and thoroughly before.

The series includes top-class monitors Focus 12, Focus 15 and a Focus Sub subwoofer. Almost reference sound quality of the monitors even in passive crossover mode allows to use them as all-purpose systems, with a pole mount adapter conveniently provided.

Special 15" subwoofer Focus Sub boosts versatility of Focuses even more: it creates powerful monitor set for a drummer together with Focus 15; or can be used for DJ monitoring and even FOH purposes due to distance

pole adapters. Besides ideal sound quality and reproduction purity, we have paid much attention to appearance and ease of use. Modern look, rigid grill backed with acoustic foam, light weight and stable design make Focus monitors comfortable and practical in small installations as well as in big concert tours.

Neutrik speakON connectors are placed on both sides of cabinet, making it convenient to create monitor chains. Also, passive/bi-amp crossover switches are optionally available for Focus 12 and Focus 15 along with the speaker processor packed with factory presets.



	<b>Focus 12</b> Passive stage monitor	<b>Focus 15</b> Passive stage monitor	<b>Focus Sub</b> Passive subwoofer
Frequency Response (-10dB)	70 – 20000 Hz	60 – 19000 Hz	45 – 350 Hz
Max SPL <sup>1</sup>	131,5 dB	132 dB	134 dB
Sensitivity (1W/1m)	96,5 dB	97 dB	96,5 dB
Transducer	12" coaxial	15" coaxial	15", 4" VC
Nominal Coverage Angle (Horizontal x Vertical)	40° x 60° or 60° x 40° Rotating horn selectable	40° x 60° or 60° x 40° Rotating horn selectable	
Impedance	8 Ohm	8 Ohm	8 Ohm
Nominal power <sup>2</sup>	400 W	400 W	700 W
Connectors	2x Neutrik Speakon Bi-amp / Passive switch	2x Neutrik Speakon Bi-amp / Passive switch	2x Neutrik Speakon
Dimensions (W×H×D)	490x320x431 mm	590x358x507 mm	601x441x655 mm
Net weight	18,5 kg	21 kg	34 kg
Shipping weight	21 kg	22 kg	36 kg
Mounting	Pole mount adapter U-Bracket flying mount (optional)	Pole mount adapter U-Bracket flying mount (optional)	M20 distance pole adapter
Enclosure materials	Plywood; wear-resistant paint	Plywood; wear-resistant paint	Plywood; wear-resistant paint
Grill	Steel grill, polymer protective net	Steel grill, polymer protective net	Steel grill, polymer protective net
	<b>Focus 12A</b> Powered stage monitor	<b>Focus 15A</b> Powered stage monitor	<b>Focus SubA</b> Powered subwoofer
Frequency Response (-10dB)	70 – 18000 Hz	60 – 18000 Hz	45 – 200 Hz
Max SPL (calculated)	128,5 dB	129 dB	131 dB
Transducer	12" coaxial	15" coaxial	15", 4" VC
Nominal Coverage Angle (Horizontal x Vertical)	40° x 60° or 60° x 40° Rotating horn selectable	40° x 60° or 60° x 40° Rotating horn selectable	
Amplifier power	700 W	700 W	1500 W
Amplifier	Class D, fan cooling, DSP with phase-linear FIR	Class D, fan cooling, DSP with phase-linear FIR	Class D, fan cooling, DSP with phase-linear FIR
Input sensitivity	+4 dBV	+4 dBV	+4 dBV
Settings	4 switchable presets	4 switchable presets	4 switchable presets
Connectors	XLR in + XLR out	XLR in + XLR out	XLR in + XLR out
Dimensions (W×H×D)	490x320x431 mm	590x358x507 mm	601x441x655 mm
Net weight	20 kg	22 kg	36 kg
Shipping weight	22 kg	24 kg	38 kg
Mounting	Pole mount adapter U-Bracket flying mount (optional)	Pole mount adapter U-Bracket flying mount (optional)	M20 distance pole adapter
Enclosure material	Plywood; wear-resistant paint	Plywood; wear-resistant paint	Plywood; wear-resistant paint
Grill	Steel grill, polymer protective net	Steel grill, polymer protective net	Steel grill, polymer protective net

<sup>1</sup> - peak value, calculated according to AES 2 - 2012

<sup>2</sup> - based on transducer power measured according to AES 2 - 2012

# ELECTRONICS

series

## Amplifier Racks

- AmpRack 1
- AmpRack 2
- AmpRack 3
- AmpRack M

## Speaker Processors

- MA 36

## Power Amplifiers

- DP600
- DP1200
- DP2400
- DP3000









Line of touring-ready rack solutions, fitted with presets for various MAG Audio systems, is designed to provide a seamless integration and convenience of use.

Based on premium amplification from Powersoft®, AmpRack series offers a great level of usability in terms of accepted input power ranges, connections, protection, and remote system control with dedicated software suite.

Customizable signal and distribution device may be built according to the user's specifications, and offers wide selection of available inputs, digital signal and control connectivity, power routing, and additional functionality.

Assembled in touring-grade rack-box with heavy duty castor wheels and front and back covers, AmpRack series is ready to hit the road along with different sets of MAG Audio systems.

				
	<b>AmpRack 1</b> Touring Rack	<b>AmpRack 2</b> Touring Rack	<b>AmpRack 3</b> Touring Rack	<b>AmpRack M</b> Touring Rack
Amplifiers	Powersoft X4 - 1 pcs	Powersoft X8 - 1 pcs or Powersoft X4 - 2 pcs	Powersoft X4 - 1 pcs Powersoft X8 - 1 pcs or Powersoft X4 - 3 pcs	Powersoft Quattrocanali 4804 - 2 pcs
Channel count	4	8	12	8
Power capacity per channel	3000 W (4 Ohm) 5200 W (2 Ohm)	3000 W (4 Ohm) 5200 W (2 Ohm)	3000 W (4 Ohm) 5200 W (2 Ohm)	1200 W (4 Ohm) 1500 W (2 Ohm)
Mains Connections	CEE 32 3P+N+E (32A) input CEE 32 3P+N+E (32A) link	CEE 32 3P+N+E (32A) input CEE 32 3P+N+E (32A) link	CEE 32 3P+N+E (32A) input CEE 32 3P+N+E (32A) link	CEE 32 3P+N+E (32A) input CEE 32 3P+N+E (32A) link
Analog signal connections	4x XLR input 4x XLR link	4x XLR input 4x XLR link	4x XLR input 4x XLR link	8x XLR input 8x XLR link
AES/EBU signal connections	2x XLR input 2x XLR link 1x EtherCon input (8x AES) 1x EtherCon link (8x AES)	2x XLR input 2x XLR link 1x EtherCon input (8x AES) 1x EtherCon link (8x AES)	2x XLR input 2x XLR link 1x EtherCon input (8x AES) 1x EtherCon link (8x AES)	
Ethernet	2x EtherCon	2x EtherCon	2x EtherCon	2x EtherCon
DANTE	Optional	Optional	Optional	Yes
Speaker Output	4x Speakon 4 pin 1x Speakon 8 pin	8x Speakon 4 pin 2x Speakon 8 pin	12x Speakon 4 pin 3x Speakon 8 pin	8x Speakon 4 pin
Case	Heavy duty flying case with front and rear covers	Heavy duty flying case with front and rear covers	Heavy duty flying case with front and rear covers	Heavy duty flying case with front and rear covers
Transportation	Handles for carrying	100mm castor wheels Handles for carrying	100mm castor wheels Handles for carrying	Handles for carrying
Standard unit height	6U	8U	8U	6U
Dimensions (W×H×D), mm	535x322x727 mm	535x561x727 mm	535x561x727 mm	535x322x727 mm
Net weight, kg	46,6 kg	60,6 kg	75,6 kg	45,6 kg
Shipping weight, kg	47,6 kg	61,6 kg	76,6 kg	46,6 kg



MA 36 is a 1U height 3 input / 6 output speaker processor for all your speaker management, protection and monitoring needs. With dedicated software suite, it is perfect for fixed installations and mobile sound systems alike.

MA 36 features 24-bit A/D and D/A convertors, 32-bit DSP, 3 analog inputs and 6 analog outputs with matrixing capabilities. Each input channel has functions of mute, 0-1000 ms delay, signal phase switch, and 6 band parametric EQ with customizable filter types.

Outputs feature muting, gains, alignment 0-1000 ms delay, phase switch, crossover functions with Linkwitz-Riley, Bessel, Butterworth filters, parametric limiter for advanced speaker protection algorithms, and 6 band parametric EQ with customizable filter types, including Lo-shelf and Hi-shelf.

Based on high-quality low-noise components and being merely of 4,1 kg of weight, MA 36 is easily integrated into existing projects, or can be used as a control center for a brand new one.



### MA 36

Speaker processor

3 inputs, Female XLR	Input channels
6 outputs, Male XLR	Output channels
20 kOhm balanced	Input Impedance
10 kOhm balanced	Output Impedance
Independent input mutes Delay 0-1000ms Polarity switch 6 band parametric EQ	Input functions
Independent output mutes Output channel matrix Output gain Output delay 0-1000ms Polarity switch Crossover (LR, BS, BW, 12-48 dB/oct) Parametric limiter 6 band parametric EQ, including Lo-shelf/Hi-shelf	Output functions
96 kHz, 32-bit	Processor
2x24 LCD, 8-LED In/Out level	Display
<= 25W	Power consumption
482x232x44 mm	Dimensions (WxDxH)
4,1 kg	Net weight
5 kg	Shipping weight



DP series is a versatile digital amplification platform for MAG Audio systems involved in fixed installation, mobile sets, and concert sound.

It is a world-class amplification solution with class D architecture and switch-mode power supply, providing cost-effective operation and less environmental footprint. With operation capacity into 4 Ohm, 8 Ohm, and bridged connections, wide range of wiring for different applications is possible.

DP series is supplied with the built-in database of MAG Audio speakers' presets, further reducing tune-up times while ensuring better protection and trouble-free operation. Complete with dedicated software suite, DP series serves as a control center for the entire installation, providing user-friendly interface for tuning, controls, monitoring, and preset management.

Lightweight, compact amplifiers are assembled on rigid metal chassis with efficient cooling, and are ready for long-term operation in demanding conditions of tight-spaces with minimal air conditioning.

				
	<b>DP600</b> Power Amplifier	<b>DP1200</b> Power Amplifier	<b>DP2400</b> Power Amplifier	<b>DP3000</b> Power Amplifier

Frequency range	20 Hz - 20 kHz		20 Hz - 20 kHz	
Channel count	2		2	
Nominal power, per channel, 2 Ohm load	-		1200 W	
Nominal power, per channel, 4 Ohm load	300 W		600 W	
Nominal power, per channel, 8 Ohm load	200 W		400 W	
Nominal power, two channels bridged, 8 Ohm load	600 W		1200 W	
Amplifier	Class D high efficiency			
Presets	Built-in MAG Audio speaker presets			
DSP speaker controls	6 parametric EQ, volume, polarity			
DSP utility controls	Power saving mode, power-up mode, 3-level password protection			
Input sensitivity	+5dBu		+7dBu	
Maximum input level	+20dBu			
Input impedance	18 kOhm unbal., 36 kOhm bal.			
Crosstalk separation	85 dB @ 1 kHz		71 dB @ 1 kHz	
THD	<0,08% from 0,1 W to full power (typically <0,05%)		<0,09% from 0,1 W to half power (typically <0,05%)	
Power consumption, 1/8 of max output power @ 8 Ohm	110 VA		600 VA	
Damping factor, 8 Ohm	> 10000 @ 100 Hz		> 500 @ 100 Hz	
S/N ratio, analog	100 dB			
S/N ratio, digital AES/EBU	114 dB			
Connectors	XLR input, XLR output, Powercon mains input, Ethernet input/link 2x XLR AES/EBU digital input			
Dimensions (W×H×D)	480×90×255 mm, 2U			
Net weight	4,9 kg		5,6 kg	



2 Merezhna str., Bila Tserkva,  
Kyiv region, 09112, Ukraine  
Tel./Fax.: +38 044 2774789  
e-mail: [info@mag-audio.com](mailto:info@mag-audio.com)  
**[www.mag-audio.com](http://www.mag-audio.com)**