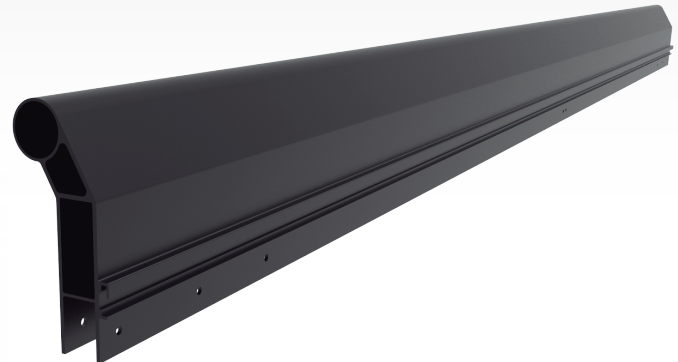


# P-SCREEN

Screen frame for cinema projection



**Marco de pantalla para proyección cinematográfica. Gracias a su diseño modular es posible formar diferentes tamaños de pantalla de manera sencilla .**

Construido a través de perfiles de aluminio extrusionado.

El acabado de toda la estructura es negro mate para evitar reflejos dentro de la sala de proyección.

Facilidad de montaje y desmontaje debido a que los ensambles se realizan con tornillos sin necesidad de soldar ningún elemento in situ.

Las piezas están marcadas para facilitar su montaje y la estructura ha sido ensamblada previamente en nuestra instalaciones, garantizando su correcto acoplamiento.

La estructura queda oculta tras la tela de proyección, una vez instalada.

No son necesarias gomas o cuerda para colocar la tela en la parte superior del marco. Los agujeros se enganchan directamente al perfil superior.

**Screen frame for cinema projection. Thanks to its modular design it is possible to form different screen sizes.**

Aluminum extruded profile designed to support the fabric screen for cinema projection.

This modular and scalable design allows the configuration of different sizes custom made for the client.

Easy to mount and dismount, all the assemblies are made by screws avoiding welding on site.

The pieces are marked to ease the assembly and have been assembled previously in our installations, warranting the correct coupling of all the elements.

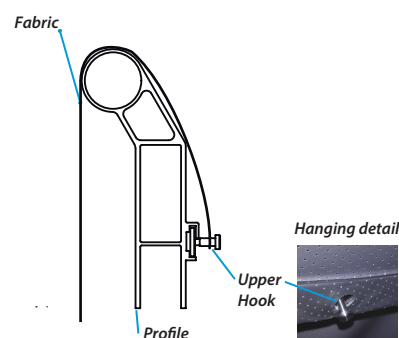
The structure remains hidden behind the fabric once it is installed.

Rubbers or cord not needed in top part of frame. The upper holes will be attached directly to the upper part of the profile.

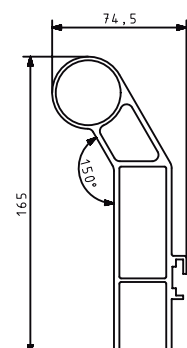
Lower part



Upper part



General Measures

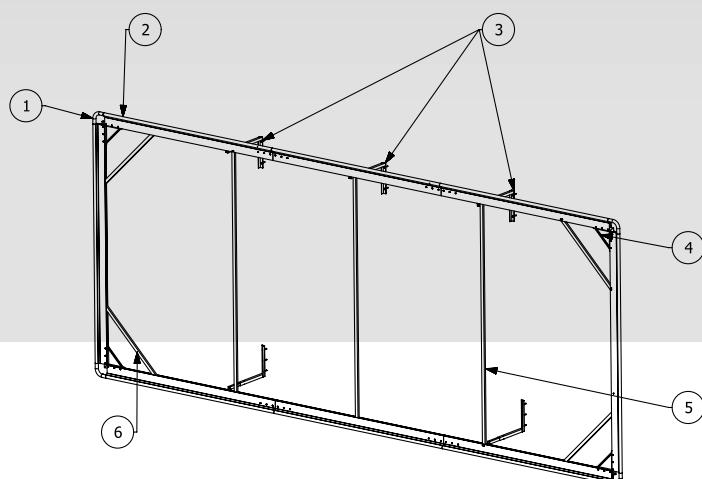


# P-SCREEN

Screen frame for cinema projection



## OVERVIEW



\* P-Screen is quoted in lineal meters including:

- 1: Rounded corners.
- 2: Extruded Profile.
- 3: Wall-mounted bracket.
- 4: Reinforcement Square.
- 5: Vertical tensor.
- 6: Diagonal tensor.

### CARACTERÍSTICAS TÉCNICAS

Acabado: Lacado en negro mate.

Peso: 3.5 kg/m (sólo el perfil).

Dimensiones generales:  
El tamaño mín. es de 2m y el máx. 15m.

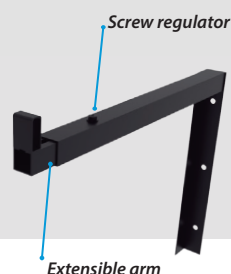
Medidas superiores pueden ser hechas a medida, bajo demanda.

La fijación de la tela al perfil se realiza con gomas o cuerda. En la parte superior puede colgarse directamente.

Añadir 15cm. a la horizontal y 22cm. a la vertical al pedir la medida de la tela.

## ANCHORING OPTIONS

### • Adjustable Wall Bracket



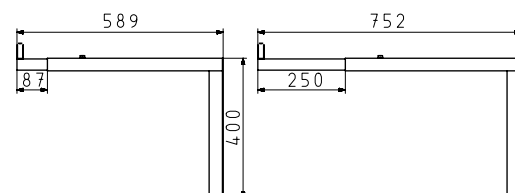
This option allows the anchorage of the screen to the wall of the projection room.

It is regulable. Allowing to place the screen in different depth positions.

The number of wall brackets will vary depending on the screen length

#### Gathered

#### Extended



### • Floating clamps for theatre mountings

This option allows the hanging of the screen frame to the ceiling or truss.

The number of wall brackets wil vary depending on the screen length.

### TECHNICAL SPECIFICATIONS

Coating: Matte finish black.

Weight: 3.5 kg/m ( Only profile).

General dimensions: The minimum width is 2m and the maximum 15m.

Bigger measures can be customized on demand.

The fabric anchorage can be done with rubbers or cord. In the upper part the fabric can be directly hanged.

Add 15cm. to the horizontal and 22cm. to the vertical when ordering the measures of the fabric.